

TENDER ENQUIRY

PUR/TE/01

NO.	FPC-24-032	Date:	25-11-24	Due on:	09-12-24
				Please ensure to indicate your offer in this schedule. In case of shortage of space, you may use your letterhead but this schedule is to be returned duly filled in & signed.	

Dear Sirs,

We invite your sealed bid on CFR basis for the supply of following store (s) as per format depicted below and over leaf.
 Bid must reach Admin Building by 1400 hours for opening in public at 1430 hours on due date.

S. NO.	DESCRIPTION	Qty.	Unit	Unit Price	Total Price
1	High Alumina Roof Bricks (KK-5A), Drg. No. W10-323 D	Nos.	17,000		
2	High Alumina Roof Bricks (KE-5A), Drg. No. W10-320 B	Nos.	18,000		
3	High Alumina Ladle Bricks (C-23), Drg. No. W10-041 A	Nos.	8,500		
4	Ladle Bricks (C-16), Drg. No. W10-046 A	Nos.	2,500		
5	Stopper Rod Sleeve (X4-B)	Nos.	1,200		
6	Stopper End Bricks (S-8), Specifications & Drawings attached	Nos.	1,000		
Note: MTC is essentially required in original. To be packed in Seaworthy export packing on wooden crates.					
Payment Terms: Usance / Deferred L/C Pre-Shipment inspection will be carriedout by HMC team and all charges will be borne by supplier. Delivery Period: As & when required Basis - Bidding Procedure: Single stage - Single Envelope Note: 1: Supply reference record for the quoted material must be provided with the quotation. 2: Certificate of Origin Under Pak - China Free Trade (FTA) is essentially required with the shipping documents (if country of Origin is China). 3: Letter of Authorization as a local agent of Foreign principal must be attached with Quotation. 4: Quantity can be Increased, decreased or deleted after tender opening if necessary. 5: Ocean freight charges upto Karachi seaport must be quoted Separately. 6: Offers having country of origin Israel & India will not be Considered. 7: Quotation of foreign principal must be attached. 8: 2% Bid security is essential to be submitted with Bid as per clause "2" of our Tender Enquiry Terms & Conditions. 9: One Local Agent can quote offer only from one foreign principal in Tender. Local agent offering bids with more than one foreign principal will not be considered. 10: HMC may reject all those offers which have validity period less than required (30 days) against tender.					

DECLARATION

Issued By :

For Head Purchase Department
 Heavy Mechanical Complex Taxila.

We certify that we have read the terms and conditions of the tender enquiry over leaf and the same are fully acceptable to us. We further agree to provide performance bond, if required.

Signature _____

Full Name _____

Seal of the Firm _____

Encl: Terms & Conditions, Proforma for Performance/Bid Bond

Holder of ASME
 Stamp Designator
 U, U2, S, PP and
 The National Board
 NB & B Stamp

Taxila : 47050 Pakistan Phones : (+92-51) 9270562 (5 Lines), (+92-51) 9314181
 Fax: (+92-51) 9270560, (92-51) 9314202, 3
 Email: hmcengg@hmc.com.pk, marketing@hmc.com.pk & procurement.hmc@gmail.com
 Web Site: http:// www.hmc.com.pk

TUV
 AUSTRIA
 BEULAS
 Registered with the
 Government of Pakistan

Annex.-A

SPECIFICATION FOR HIGH ALUMINA BRICKS

EAF ROOF & LADLE BRICKS

A. CHEMICAL COMPOSITION

1. Al_2O_3 = > 75 %

B. MECHANICAL PROPERTIES

1. Refractoriness = > 1790-1825 Deg.C

2. Softening temperature
under load 2kg/Cm Sq. = > 1520 Deg.C

3. Porosity % = < 23 %

4. Compression strength at
(room temperature) Kg/ Cm Sq. = > 600

5. Shrinkage after reheating.
1500 deg. C (3 hours) = < 0.5

KK-5
KE-5
OTW-1
W10-361
-C-23
C-18
2-3
X4B

CIF

S.F.

Dasg
-P.Pe.-11

x. Refractoriness

04 03

Stopper End Brick (S-8)

1. Chemical Composition

Al_2O_3 : 58 – 65 %

Fe_2O_3 : 2.5% Max

2. Compressive Strength
(At room temperature)

$\geq 200\text{Kg/cm}^2$ Min

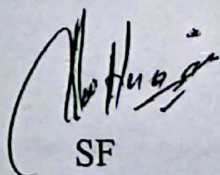
3. Porosity

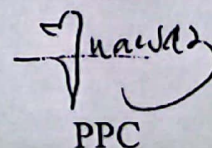
: 20 %

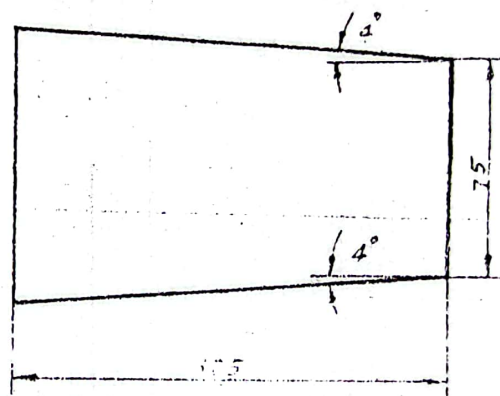
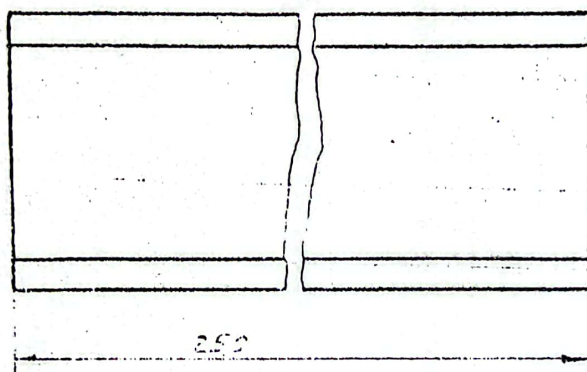
4. Refractoriness

$\geq 1750^\circ\text{C}$ (SK 34)

CIF

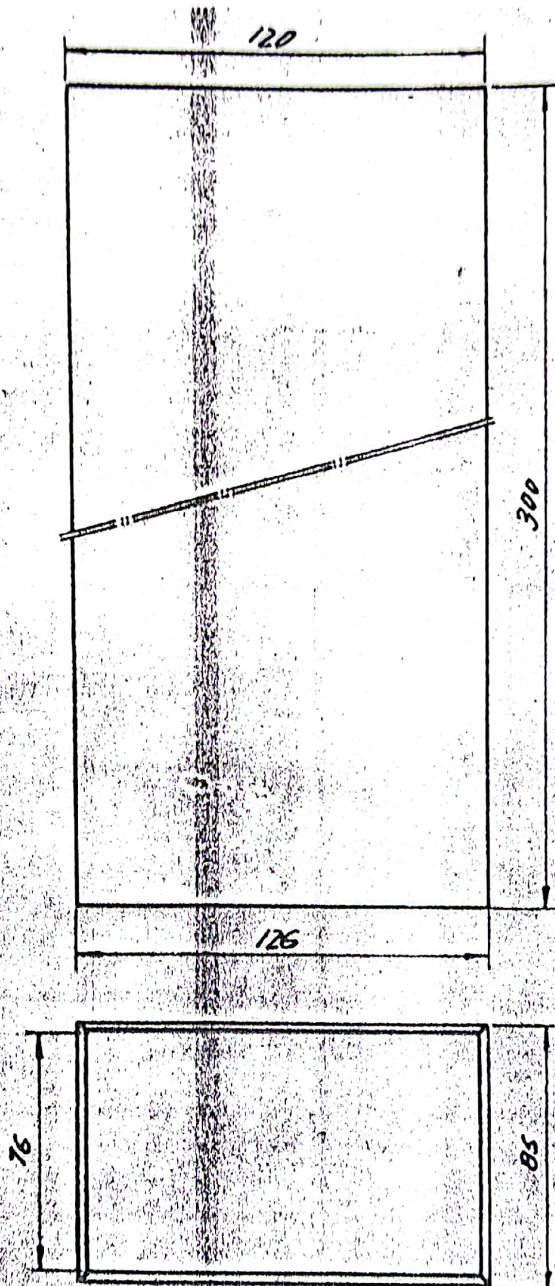

SF


PPC

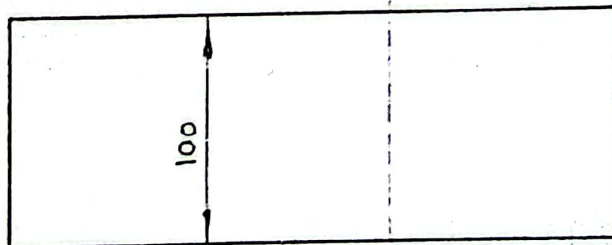
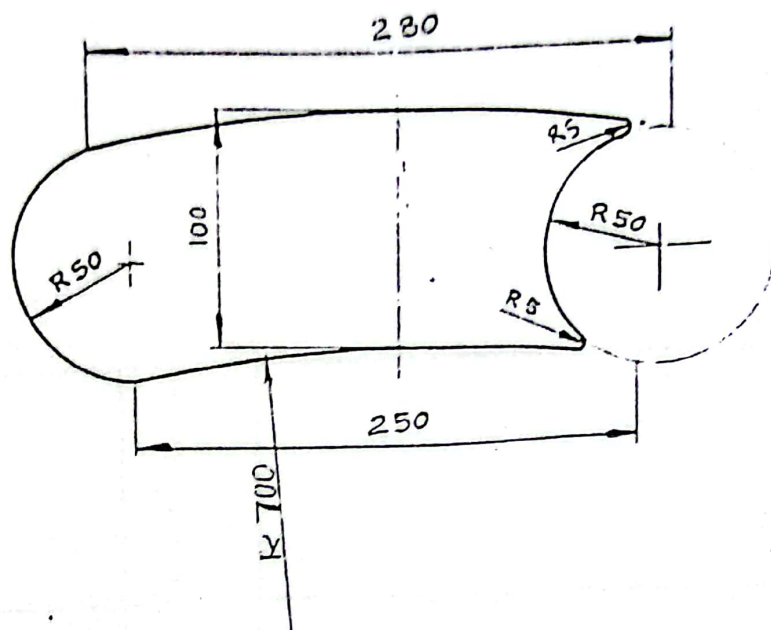


Roof Brick

					HEAVY FOUNDRY & FORGE TAXILA	
INDEX	ALTERATION		LOCATION	DATE	SIGN.	
MATERIAL	WEIGHT	SCALE	CUSTOMER	DESIGNED		DRAWN
		1:2	GROUP	TRACED		CHECKED
APPLICATION NO		POSITION	APPROVED		DATE 13/8/88	
REF. DRG. NO.		ROOF BRICK FOR 3 TONS + 15 TONS E. A. FURNACES			DRG. NO. W 10-323	
KK-5						



DESIGNED BY STEEL FOUNDRY		13.3.2000		HMC	
MADE AS PER SKETCH				FOUNDRY & FORGE WORK	
ALTERATION		DATE SIGN		TAXILA	
DATE	INT.	EQPT.	GROUP	DESIGNED	APPROVED
				TRAIN	CHECKED
INDICATION NO.	POSITION	ROOF BRICK		TRACED	DATE 30.9.05
REF. DRG. NO. KE-5A		NATURE OF PIECE FINISHED		DRG. NO.	W/O 320 B



CUSTOMER:-

GROUP:-

HEAVY FOUNDRY & FORGE
TAXILA

INSULATION TILE

REVISION NO. DATE SIGN.

DESIGNED

APPROVED

SCALE WEIGHT MAT.

5.7KG CLAY.

APPLICATION NO. POSITION

DRAWN

DATE

DRAWING NO.

REF. DRG. NO.

A.KHALIQ

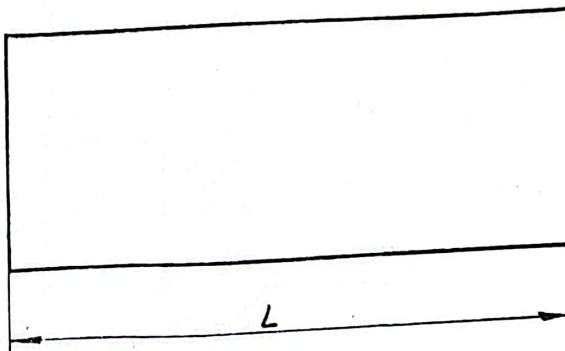
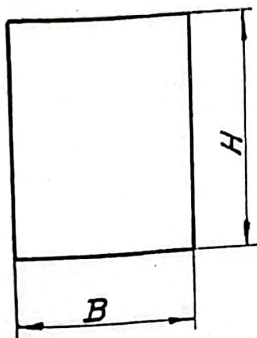
20.4.1977

W10-041

C-23

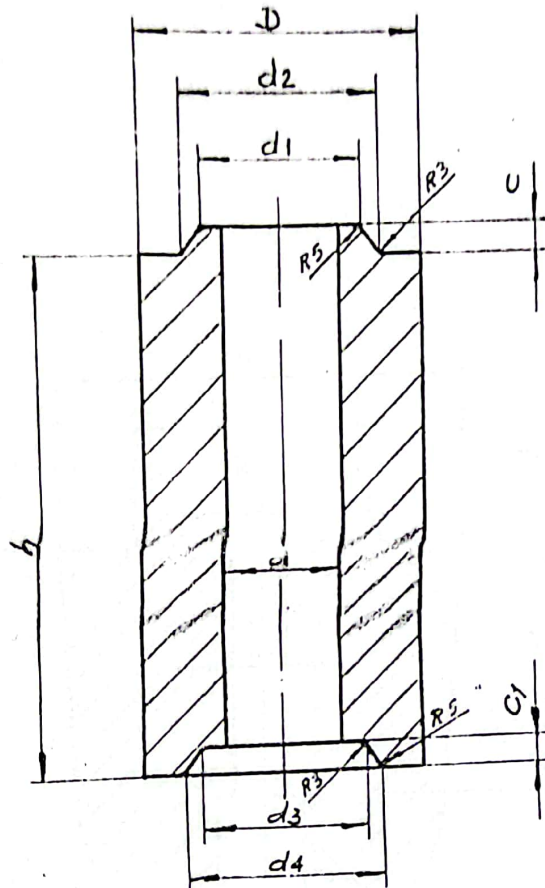
CHECKED

NATURE OF PIECE



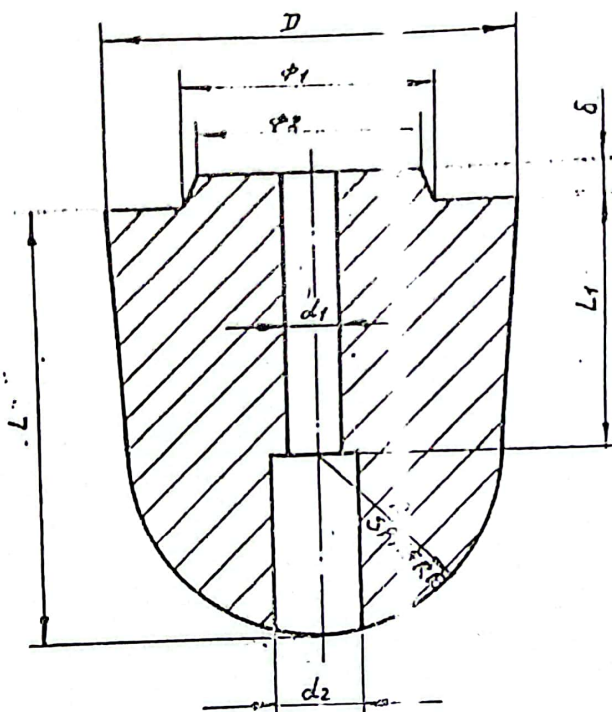
C-16	250	100	80	4.3
A ₆ -4	250	140	80	5.9
A ₆ -1	300	140	80	7.2
Ref. Drg No.	L	H	B	Wt.

CUSTOMER:-			GROUP:-		HEAVY FOUNDRY & FORGE TAMILAR		
			LADLE BOTTOM BRICK				
A	13.3.2000	<input checked="" type="checkbox"/>	DESIGNED	APPROVED	SCALE	WEIGH	MAT.
REVISION	DATE	SIGN					
APPLICATION NO.		POSITION	DRAWN	DATE	DRG. NO.		
REF. DRG. NO.			CHECKED	23.7.80	W10-046		
C-16, A ₆ -4, A ₆ -1.				NATURE OF PIECE	A		



DRAWING NO.	SIZE mm.									WEIGHT
	h	D	d	d1	d2	d3	d4	C	C1	kg
X-1	200	100	40	63	67	67	72	10	12	2.8
X-2	200	125	48	75	81	79	86	14	16	4.5
X-4 A	200 300	145	54	82	88	86	93	14	16	6.0 9.0
A1-3	300	165	54	82	88	86	93	14	16	10

CUSTOMER:-			GROUP-LADLE BRICKS		HEAVY FORGE & FORGE TANKS		
A			SLEEVE BRICK				
REVISION	DATE	SIGN.	DESIGNED	APPROVED	SCALE	WEIGHT	MAT.
	13.3.2000						
APPLICATION NO. POSITION			DRAWN		DATE		
REF. DRG. NO.			CHECKED		NATURE OF PIECE		
A1-3 X-1,2&4			10.7.1980		DRG. NO.		
					W10-045 A		



△ R67.5 IS ADDED IN S-8

* $AO_2 O_3 = 55\% \text{ Min.}$

Fix Carbon = 5~8%

A2-5	140	125	81	75	23	36	75	12	57.5	2.7
S-8	160	145	88	82	20	30	95	12	67.5	4.5
Cn-11	160	145	88	82	20	31	80	14	67.5	4.5
A2-1	160	165	88	82	23	35	85	14	67.5	5
Ref. Drg. No.	L	D	ϕ_1	ϕ_2	d_1	d_2	L1	δ	R	Wt.

CUSTOMER:-			GROUP:-		HEAVY FOUNDRY & LARGE TAXILA		
A 31-3-07 01			STOPPER END (PIN TYPE)				
REVISION	DATE	SIGN.					
			DESIGNED	APPROVED	SCALE	WEIGHT	MAT.
			DRAWN	DATE			
APPLICATION NO. POSITION			CHECKED	22.7.1980	DAS. NO.		
REF. DRG. NO. A2-5, S-8, Cn-11, A2-1.			APPROVED BY		1710-031A		